

# LIVING

## *room revamp*

Transform an awkward space with  
colour and clever DIY solutions



If your lounge room is small, there are ways you can make it feel bigger. Check out this makeover to see how colour and clutter-busters play a key role in streamlining a tight space. And it's got a fabulous idea for making use of that area under the stairs that is often under-utilised especially in older homes.

   
**SHARE  
THE LOVE**

Show off your  
finished *Better  
Homes and  
Gardens* projects!  
Upload photos  
to Instagram (tag  
#bhgaus and the  
handle @bhgaus)  
or Facebook via  
bhg-showusyours.  
com.au

## PROJECT 1 **EASY STEPS TO PAINTING YOUR ROOM**

How can you create an industrial look that is cosy and rich? You use colour! A rich deep red is a starting point on the fireplace chimney of this small living space. The old wonky painted shelves were in dire competition with the stairs, and also ruin the symmetry of the room, so the walls are stripped, patched and painted along with the bannisters.

### Gather your supplies

- Paint for feature wall
- Paint for other walls
- Paint for banisters

### You'll also need

Dropsheets; scraper; sugar soap; spatula; filler; plaster finishing compound; broad knife; sandpaper; painter's tape; paint rollers; paint trays; paintbrushes

### Here's how

**STEP 1** Clear the room and strip the walls of any shelves. Lay dropsheets. Wash walls using a sugar soap solution and use a scraper to remove any loose or flaking paint until paint is sound. Patch screw holes in the wall with a spatula and filler.

**STEP 2** Where loose paint has been removed, patch the walls with plaster finishing compound using a broad knife, feathering the edges to the old paint work. Leave to dry then sand smooth. Remove dust.

**STEP 3** Apply undercoat to all patched work. Let dry. To apply finishing coats, cut in around the skirting boards and in the corners with a brush before painting the rest of the walls using a roller.

**STEP 4** Paint the stair balustrade and stringers on the side of the stair using a small roller. When painting around the stainless steel wires, wrap masking tape around the wires and paint around them using a brush.



**STEP 1**



**STEP 2**



**STEP 3**

**STEP 5** Cut in the feature wall, here the fireplace, with a paintbrush, including above and below any picture rails.

**STEP 6** Apply 2 to 3 coats of paint to the feature wall using a large roller. After you have finished painting a section, and before you load up the



**STEP 4**



**STEP 5**



**STEP 6**

roller with paint to continue, go over the section you have just painted with the empty roller to remove any lap marks and to even out the finish. This is called laying off.

## PROJECT 2 EASY STEPS TO FLOATING WALL SHELVES



Built-in shelves can seem like a handy storage solution but they can quickly become cluttered and if not symmetrical they can make a space look awkward, especially if they are under the stairs. The solution is to install minimalist metal shelves that can complement the newly painted staircase bannisters.

### Gather your supplies

- Kaboodle Slimline Steel Frame Shelf units

### You'll also need

Screwdriver; drill; drill bit; spirit level; pencil; tape measure; 6.5mm masonry drill bit; hammer; green wall plugs; 50mm screws

### Here's how

**STEP 1** Assemble shelf units using a screwdriver following product instructions. Drill holes through top and bottom rails on one side of steel frame which you can screw through to fix the units to the wall. Use a standard drill bit.

**STEP 2** Use a spirit level to lightly draw a vertical line up the wall which will be the position of the sides of your units. Measure up this



STEP 1



STEP 3



STEP 5



STEP 6



STEP 7

line and mark where the top of each unit will sit. Draw a level line from this point across the wall.

**STEP 3** Hold each unit up against the wall in position and mark the holes drilled in the units on the wall. Take note of which unit goes where so the holes in the units will match the holes in the wall.

**STEP 4** Use a drill fitted with a 6.5mm masonry drill bit to drill holes

in the wall at each marked point.

**STEP 5** Using a hammer, tap green wall plugs into each of the holes in the wall until they are flush with the surface.

**STEP 6** Reposition units against the walls and screw through holes in units into wall plugs using 50mm screws.

**STEP 7** Install melamine shelves that come with the units into the shelf.

## PROJECT 3 EASY STEPS TO A DAYBED



**STEP 4**



**STEP 5**

### Gather your supplies

- Kaboodle 900mm metal sided drawer unit
- 16mm MDF sheet
- 230mm round furniture legs
- 2100 x 900 x 30mm laminated pine panels
- Large round coat hooks
- 30mm dowel

### You'll also need

Circular saw, PVA glue; drill; countersinking drill bit; 50mm screws; undercoat; paint; painting gear; 6.5mm masonry drill bit; green wall plugs



**STEP 2**

of unit in position. Also screw in a divider which will separate the space for the drawers from the area for hidden storage.

**STEP 4** Turn unit over and install runners from drawer units on inside following product instructions.

**STEP 5** Glue and screw top into sides and divider. .

**STEP 6** Assemble drawer unit following product instructions.

**STEP 7** Undercoat then apply 2 coats of paint to boxes, drawer fronts and the legs using a roller.

**STEP 8** Screw fittings for legs into corners of units then screw the legs onto the fittings.

**STEP 9** Sit units in position. Drill through back into wall using masonry drill bit, insert wall plug and screw in place. Insert drawers. Screw legs in place.



**STEP 6**



**STEP 8**



**STEP 9**

### Here's how

**STEP 1** use circular saw to cut MDF sheet to construct boxes to suit width and height of drawer units. Make maximum depth of units 900mm to suit width of pine top. Here the base of the unit is full depth while the top is 800mm. This allows space for the drawers with a small area at the back for hidden storage.

**STEP 2** Spread PVA glue along edges of sides then sit base on top. Predrill through base into sides using a countersinking drill bit and screw together using 50mm screws.

**STEP 3** Glue and screw back

## PROJECT 3 EASY STEPS TO A DAYBED CONTINUED...

**STEP 10** Cut laminated pine sheet to length and width to suit top of unit. Undercoat, paint then glue sheet to top of units. Make the edge of the sheet flush with the drawer fronts, leaving the top edge of the divider towards the back of the units exposed. Leave to dry.

**STEP 11** Use offcuts of laminated panels to make lids for the storage areas at the back of the units. Drill holes through the lids so you can get your fingers in to lift them up.

**STEP 12** To make side table between the units and the wall, cut 2 pieces of laminated pine sheet. One will sit against the side of the unit and the other will sit on top of this and extend to the wall, where it will be supported by a batten screwed to the wall. Where they join, cut on a 45 degree angle to form a mitred join for a neat finish. Paint components then screw side piece to unit. Spread glue along mitred join, place top in position then predrill and screw through top into side piece and into batten on wall.



**STEP 11**

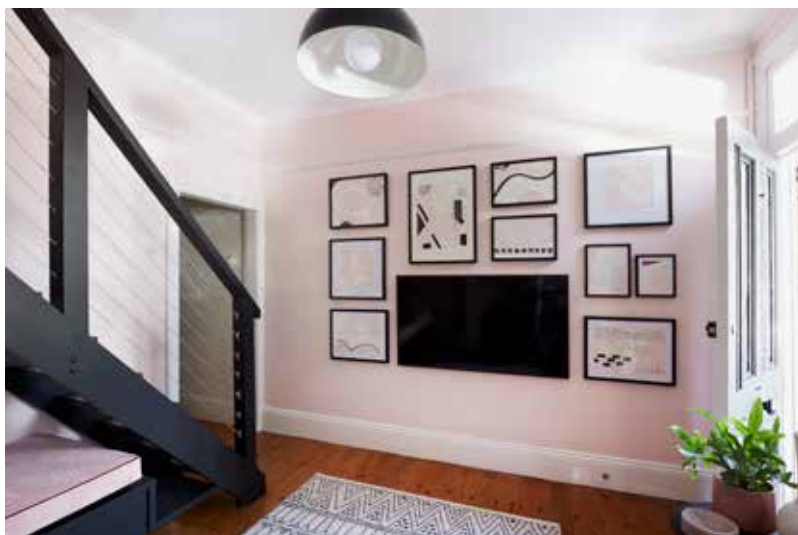
**STEP 13** Cut more laminated panel pieces to make the shelf at the other end of the units. Paint then screw in position.

**STEP 14** Have custom cushions made to suit your space. For the backrest, have loops attached to one side of the cushion that will be used to hang off the dowel.

**STEP 15** On back of wall behind the day bed, screw large round coat hooks to wall. Cut dowel to fit between wall and underside of stairs. Slide backrest cushion over dowel then rest the dowel on the coat hooks.



**STEP 12**



### CREATE A TV ART GALLERY WALL

A gallery wall is a fantastic way to camouflage a flatscreen TV. All you need is a bunch of black frames with mat boards. You can even paint your own designs onto art paper, using artist's acrylics. Let dry, then mount on the backing board, position mat board and put in frame. Mark a rectangle on the wall, then work out an arrangement of frames around the TV. Make sure the distance between frames is equal. You can use different-size frames as long as the arrangement fits within the rectangle. When the TV is off it looks like part of the picture wall.

### Stockists

**Bunnings** Bayliss lema rug 200 x 290cm, \$333. Wet by Home Design hanging round mirror 70cm in Black, \$82. Verve design Noah table lamp, \$69. Verve design metal dome pendant in Black, \$64.20. Kaboodle slimline steel frame shelf 900mm or 600mm, from \$129. **The Art and Framing Company** Botanic Antique coconut 50 x 70cm unframed, \$129. Desert Pastel 50 x 70cm unframed, \$129. **Country Road** Thea desk clock, \$59.95. Quin small vase, \$29.95. **Freedom** Bebour deco object in Black, \$49. **Kmart** Green suede tray, \$7.50. **The Lost and Found Department** Square natural linen cushion, \$55. Lauan Kankuri throw in Charcoal, \$279.95. **Oz Design** Tropez side table in White Stone 50x50cm, \$259. Marsala cushion 50 x 50cm, \$109.95. Bart vase in Rhubarb, \$119.95. **McMullin & Co.** Hannah vessel in White, \$139. **Spotlight** Living Space monochrome moment matte ceramic vase in White, \$30. A3 black frame, \$18.90. **Steal The Limelight** Round green velvet cushion, \$75. Square green 50 x 50cm cushion, \$75. **Target** Sedona small vase in Rust Red, \$12. **Harry Harthog** Design Lives Here Australian Interiors Furniture and Lighting by Penny Craswell, \$59.99. Mad About the House: 101 Interior Design Answers By Kate Watson-Smyth, \$49.99. Plant Tribe by Igor Josifovic, \$49.99. Scented Life by Pat Princi-Jones, \$29.99. Australian Modern Architecture Landscape Design by P Goad, \$80. Where Architects Sleep by Sarah Miller, \$35. Galliano: Spectacular Fashion by Kerry Taylor, \$90. ■