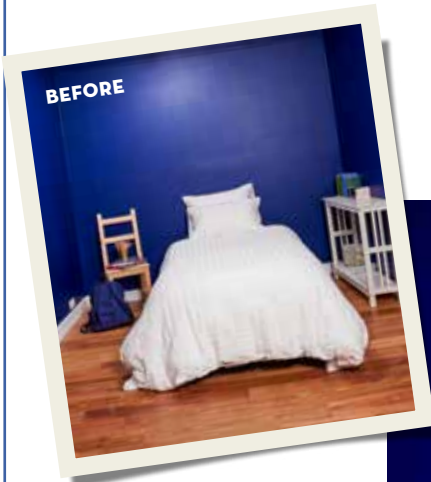


BEDHEAD BLING

WANT TO ADD A
HEADBOARD TO
YOUR BEDROOM
FAST? JUST PAINT
THE WALL!



Give a simple ensemble bed a bespoke bedhead using nothing more than chalk and paint. It's budget friendly and fun to do. Plus, once you add fairy lights, it's magical too. You don't need to be an artist to do this, you just sketch your design – the easiest thing is to copy a real bedhead – paint over the lines and hey, presto, you have a beautiful bedhead.

LIGHT UP THE NIGHT

Add a touch of whimsy to your bedroom with fairy lights. They're an easy and affordable way to create ambient light and you can go for coloured bulbs for even more fun!



SHARE THE LOVE

Show off your finished *Better Homes and Gardens* projects! Upload photos to Instagram (tag #bhgaus and the handle @bhgaus) or Facebook via bhg-showusyours.com.au

EASY STEPS TO YOUR PAINTED BEDHEAD

This project is a great way to transform a teenager's bedroom for less, but it works for any age. Simply choose a bedhead style to suit your interiors.

Gather your supplies

- Acrylic interior paint
- Battery-operated fairy lights

You'll also need

White chalk; coloured drawing paper; tape measure; painter's tape; length of timber; spirit level; paintbrushes; paint tray; self-adhesive hooks

For you to note

- A headboard should finish at least 600mm above your bed.
- This is a white-painted design on a dark-coloured wall, but you can go the opposite way with a dark design on a light wall. This may look stark and not as dramatic though.
- Choose your paintbrush size according to your design.
- Use battery-powered fairy lights so you don't have to plug them in.

Here's how

STEP 1 Search for timber and metal bedhead designs online, then use white chalk to draw bedhead designs on coloured paper. Sketch a few designs, then choose your favourite.

STEP 2 Use a tape measure to mark the height and width of the bedhead frame on the wall in chalk, then move the bed out of the way.

STEP 3 Mark the top and width of the bedhead on the wall using squares of painter's tape, using a spirit level to check for level.



TEAM WITH A THEME

Choose a vintage chair the same shape as the bedhead and paint it in the same colour. Festoon the back with fairy lights and use it as a bedside table. So easy!



STEP 1



STEP 2



STEP 3



STEP 5



STEP 7



STEP 4



STEP 6

STEP 4 Draw the frame of the bedhead on the wall in chalk – here, a curved design based on a classic wrought-iron frame – using the tape as a guide.

STEP 5 Use the length of timber to draw the rails of the bedhead inside the marked frame, checking for level with the spirit level.

STEP 6 Paint the horizontal base rail first with a paintbrush, then the uprights and the curved frame. Apply at least 2 coats of paint and leave to dry after each coat.

STEP 7 Once paint is dry, attach self-adhesive hooks at regular intervals around the bedhead frame, winding a string of fairy lights around the hooks. ■



MAKE IT MAGIC

You can suspend pots of trailing greenery, such as devil's ivy, from wall hooks and weave battery-operated fairy lights through the plant. How enchanting!

“
Make your
bedroom glow
with fairy lights
”

Stockists

Dulux dulux.com.au Wash&Wear low-sheen paint in Blue Lobelia.
Spotlight spotlightstores.com KOO Seersucker Quilt Cover Set White, \$57/single (sale price). Emporium Led Pearl Lights Clear, \$12.